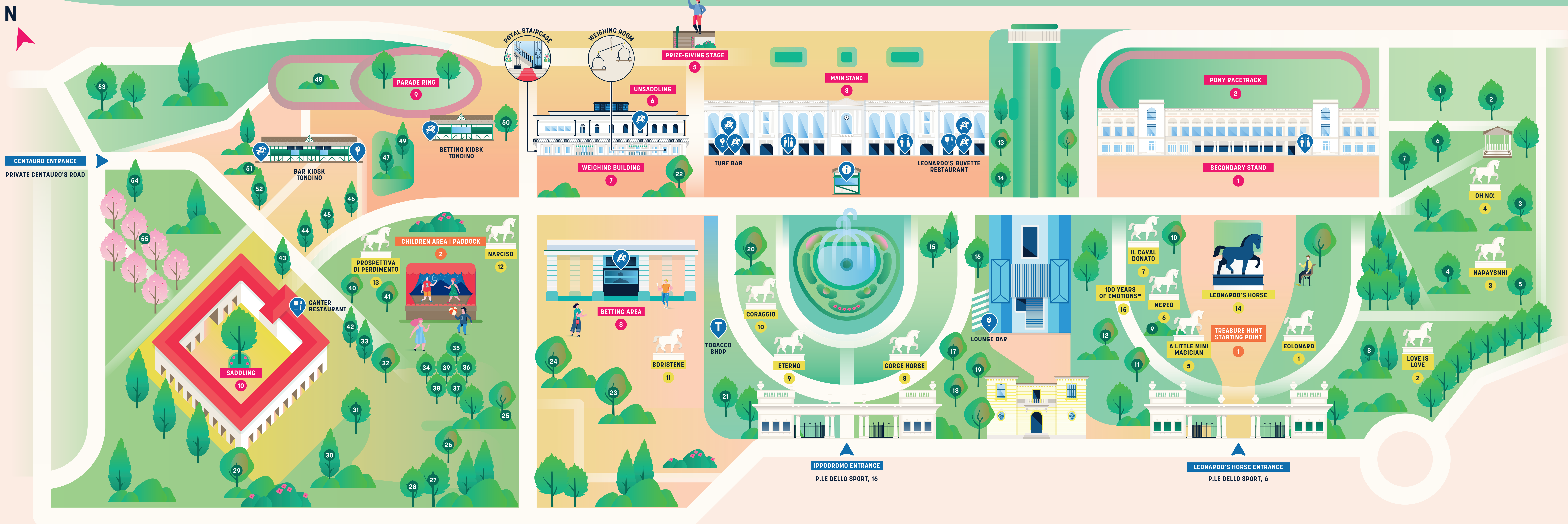


# DISCOVER SAN SIRO



## MAP KEY



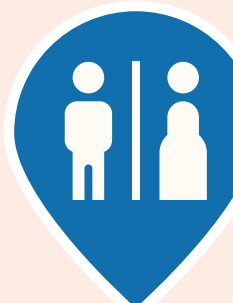
RESTAURANT



BAR



BETTING AREA



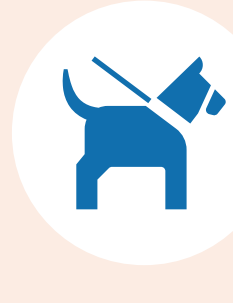
TOILETTE



INFO POINT



TOBACCO SHOP



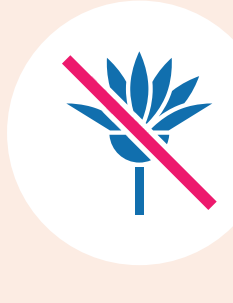
Dogs on lead with muzzle



Do not litter



Do not play football



Do not pick flowers



Do not climb on artwork and monuments



No bicycles/scooters/roller skates/skate boards

## POINTS OF INTEREST

### HISTORY AND ARCHITECTURE

- 1 Secondary Stand
- 2 Pony Racetrack
- 3 Main Stand
- 4 Racetrack •
- 5 Prize-giving Stage •
- 6 Unsaddling
- 7 Weighing Building •
- 8 Betting Area
- 9 Parade Ring
- 10 Saddling •

• Authorized only

### ART AND DESIGN

- 1 Eolondard / Daniele Papuli
- 2 Love Is Love / Marcelo Burlon
- 3 Napaysnhi / Elena Salmistraro
- 4 Oh No! / Analogia Project
- 5 A Little Mini Magician / Marcel Wanders
- 6 Nereo / Serena Confalonieri
- 7 Il Caval Donato / Roberto Fragata
- 8 Gorge Horse / Matteo Cibic
- 9 Eterno / Mario Trimarchi
- 10 Coraggio / Markus Benesch
- 11 Boristene / Antonio Marras
- 12 Narciso / Simone Crestani
- 13 Prospettiva Di Perdimento / Vito Nesta
- 14 Leonardo's Horse
- 15 "100 years of emotions" exhibition  
\* from 17/10/2020

### FOR KIDS

- 1 Treasure Hunt starting point  
App Leonardo Horse Project
- 2 Children Area | Paddock

### BOTANICAL PARK

- 1 Olea europaea
- 2 Taxus baccata
- 3 Abies nordmanniana
- 4 Fagus sylvatica
- 5 Platanus x acerifolia
- 6 Ficus carica
- 7 Catalpa bignonioides
- 8 Chimonanthus praecox
- 9 Taxodium distichum
- 10 Tilia x moltkei
- 11 Cedrus deodara
- 12 Calocedrus decurrens
- 13 Syringa vulgaris
- 14 Tilia platyphyllos
- 15 Acer pseudoplatanus
- 16 Tilia tomentosa
- 17 Lagerstroemia indica
- 18 Cedrus atlantica
- 19 Prunus laurocerasus
- 20 Rhododendron spp.
- 21 Quercus rubra
- 22 Wisteria sinensis
- 23 Tsuga canadensis
- 24 Aesculus hippocastanum
- 25 Aesculus x hybrida
- 26 Platanus x acerifolia
- 27 Carpinus betulus
- 28 Acer palmatum
- 29 Quercus rubra
- 30 Cladastis lutea
- 31 Sequoia sempervirens
- 32 Cedrus libani
- 33 Fagus grandifolia
- 34 Cedrus atlantica
- 35 Calocedrus decurrens "Aureovariegata"
- 36 Betula verrucosa
- 37 Acer palmatum "Dissectum Atropurpureum"
- 38 Ulmus glabra "Pendula"
- 39 Ilex aquifolium
- 40 Liquidambar styraciflua
- 41 Fagus sylvatica "Purpurea Tricolor"
- 42 Robinia pseudoacacia "Casque rouge"
- 43 Sophora japonica
- 44 Betula verrucosa "Youngii"
- 45 Nandina domestica
- 46 Fagus sylvatica "Purpurea Tricolor"
- 47 Picea pungens "Pumila"
- 48 Malus floribunda
- 49 Larix decidua
- 50 Magnolia grandiflora
- 51 Fagus sylvatica "Pendula"
- 52 Amelanchier lamarckii
- 53 Prunus cerasifera "Pissardii"
- 54 Picea abies
- 55 Prunus serrulata "Kanzan"

<https://www.ippodromisnai.it/>

[ippodromo\\_snai\\_san\\_siro](#)

[Ippodromo Snai San Siro](#)

[Ippodromo Snai San Siro](#)



IPPO  
DROMO  
SNAI  
SAN SIRO



N

CENTAURO ENTRANCE  
PRIVATE CENTAURO'S ROAD

RACETRACK

4

PARADE RING

9

BETTING KIOSK  
TONDINO

BAR KIOSK  
TONDINO

CHILDREN AREA | Paddock

2

NARCISO

12

PROSPETTIVA  
DI PERDIMENTO

13

CANTER  
RESTAURANT

SADDLING

10

MAP KEY



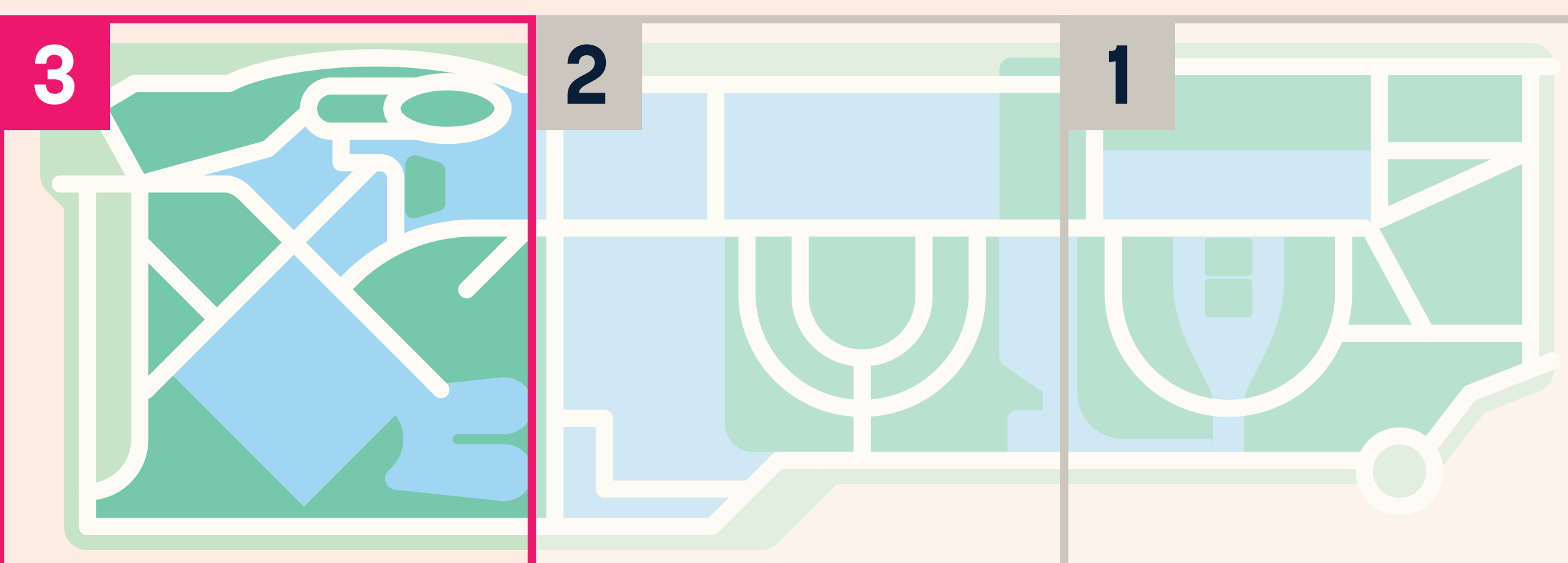
RESTAURANT



BAR



BETTING AREA



# DISCOVER SAN SIRO

## POINTS OF INTEREST

### HISTORY AND ARCHITECTURE

- 4 Racetrack •
- 9 Parade Ring
- 10 Saddling •
- Authorized only

### ART AND DESIGN

- 12 Narciso / Simone Crestani
- 13 Prospettiva Di Perdimento / Vito Nesta

### FOR KIDS

- 2 Children Area | Paddock

### CURIOSITY BOX

The Snai San Siro Racecourse is located within an area of 1,400,000 square meters, 85% of which consists of green areas. A real "lung" which represents a very important environmental resource for the entire city of Milan.

It houses a botanical park of immense value, with 55 species of tree both native and imported from different countries of the world. It was created in 1920 thanks to the passion for botany of the Durini and Turati counts who reserved large spaces of the Racecourse for increasingly rare and precious species.

Many trees present in the Botanical Park have been donated by associations and clubs from all over the world which, after having participated in important equestrian events, wanted to contribute to this wonder.

If you look closely, among the trees you can see squirrels, hares and various species of birds which have always populated the park.

### BOTANICAL PARK

- 24 Aesculus hippocastanum
- 25 Aesculus x hybrida
- 26 Platanus x acerifolia
- 27 Carpinus betulus
- 28 Acer palmatum
- 29 Quercus rubra
- 30 Cladrastis lutea
- 31 Sequoia sempervirens
- 32 Cedrus libani
- 33 Fagus grandifolia
- 34 Cedrus atlantica
- 35 Calocedrus decurrens "Aureovariegata"
- 36 Betula verrucosa
- 37 Acer palmatum "Dissectum Atropurpureum"
- 38 Ulmus glabra "Pendula"
- 39 Ilex aquifolium
- 40 Liquidambar styraciflua
- 41 Fagus sylvatica "Purpurea Tricolor"
- 42 Robinia pseudoacacia "Casque rouge"
- 43 Sophora japonica
- 44 Betula verrucosa "Youngii"
- 45 Nandina domestica
- 46 Fagus sylvatica "Purpurea Tricolor"
- 47 Picea pungens "Pumila"
- 48 Malus floribunda
- 49 Larix decidua
- 50 Magnolia grandiflora
- 51 Fagus sylvatica "Pendula"
- 52 Amelanchier lamarckii
- 53 Prunus cerasifera "Pissardii"
- 54 Picea abies
- 55 Prunus serrulata "Kanzan"



Dogs on lead with muzzle



Do not litter



Do not play football



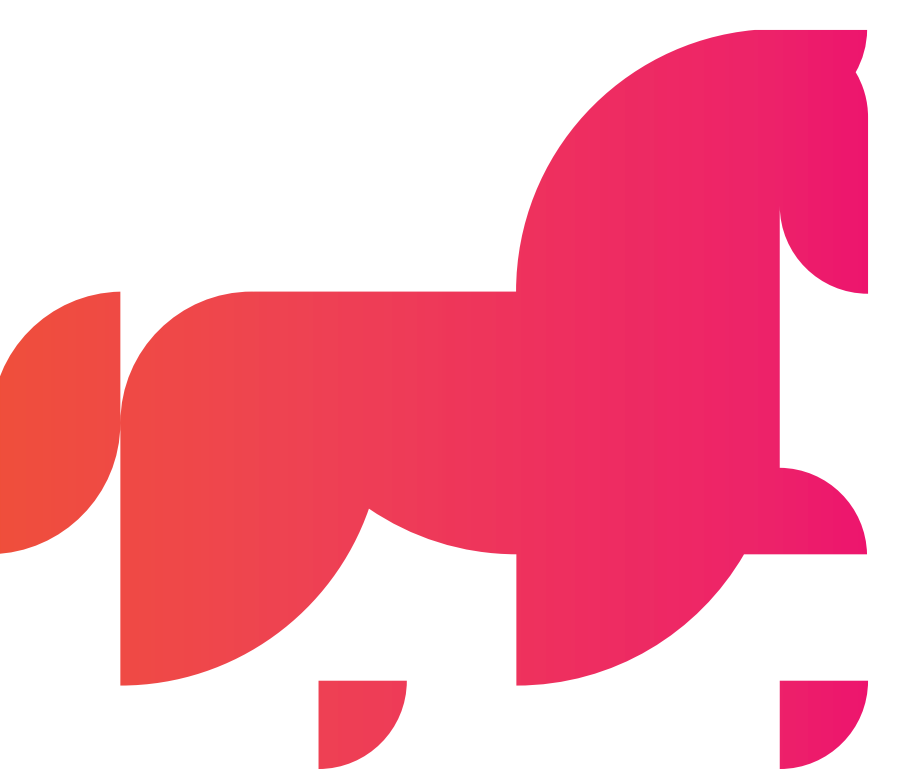
Do not pick flowers



Do not climb on artwork and monuments



No bicycles/ scooters/ roller skates/ skate boards



IPPO  
DROMO  
SNAI  
SAN SIRO

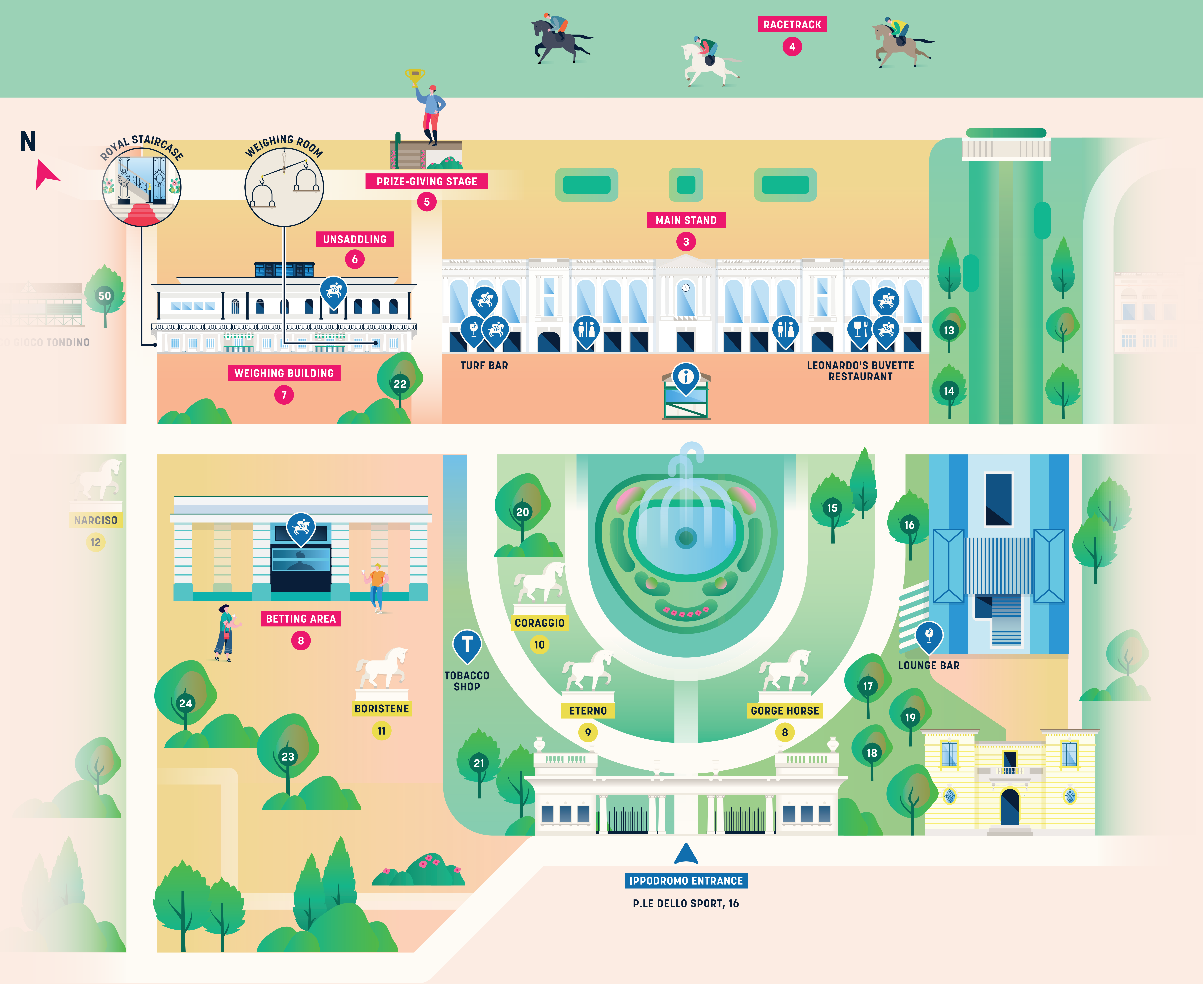
[https:// www.ippodromisnai.it/](https://www.ippodromisnai.it/)

[ippodromo\\_snai\\_san\\_siro](#)

[Ippodromo Snai San Siro](#)

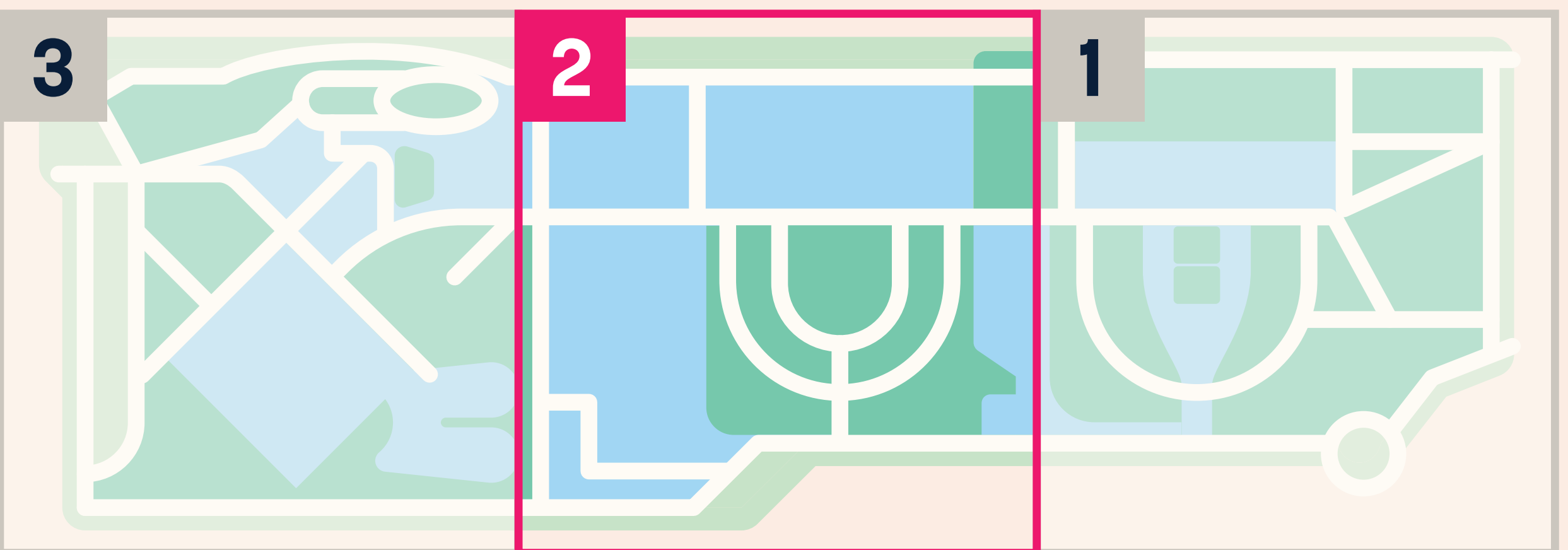
[Ippodromo Snai San Siro](#)





MAP KEY

- RESTAURANT
- BAR
- BETTING AREA
- TOILETTE
- INFO POINT
- TOBACCO SHOP



# DISCOVER SAN SIRO

## POINTS OF INTEREST

### HISTORY AND ARCHITECTURE

- 3 Main Stand
- 4 Racetrack •
- 5 Prize-giving Stage •
- 6 Unsaddling
- 7 Weighing Building •
- 8 Betting Area
- Authorized only

### CURIOSITY BOX

In 2004, the Snai San Siro Racecourse was declared a monument of cultural interest and it is the only equestrian facility in the world to have been awarded this prestigious title.

The structure of the Racecourse, as we can admire it now, was built by the architect Paolo Vietti Violi, in the early 1900s. The architect Vietti Violi won an international competition held to renovate the existing area according to the new needs of the time: combining sport and the aggregation of a society in full swing.

The new Racecourse was opened on 25th April 1920, becoming a Racecourse-Monument characterized by a delightful post-Liberty style which can still be admired by looking at the stands, the Weighing Building and the ancillary buildings located within the area. The Racecourse became a place of great aggregation attracting more and more visitors.

### ART AND DESIGN

- 8 Gorge Horse / Matteo Cibic
- 9 Eterno / Mario Trimarchi
- 10 Coraggio / Markus Benesch
- 11 Boristene / Antonio Marras
- 12 Narciso / Simone Crestani

### BOTANICAL PARK

- 13 Syringa vulgaris
- 14 Tilia platyphyllos
- 15 Acer pseudoplatanus
- 16 Tilia tomentosa
- 17 Lagerstroemia indica
- 18 Cedrus atlantica
- 19 Prunus laurocerasus
- 20 Rhododendron spp.
- 21 Quercus rubra
- 22 Wisteria sinensis
- 23 Tsuga canadensis
- 24 Aesculus hippocastanum

- Dogs on lead with muzzle
- Do not pick flowers
- Do not litter
- Do not climb on artwork and monuments
- Do not play football
- No bicycles/ scooters/ roller skates/ skate boards



- [https:// www.ippodromisnai.it/](https://www.ippodromisnai.it/)
- [ippodromo\\_snai\\_san\\_siro](#)
- [Ippodromo Snai San Siro](#)
- [Ippodromo Snai San Siro](#)

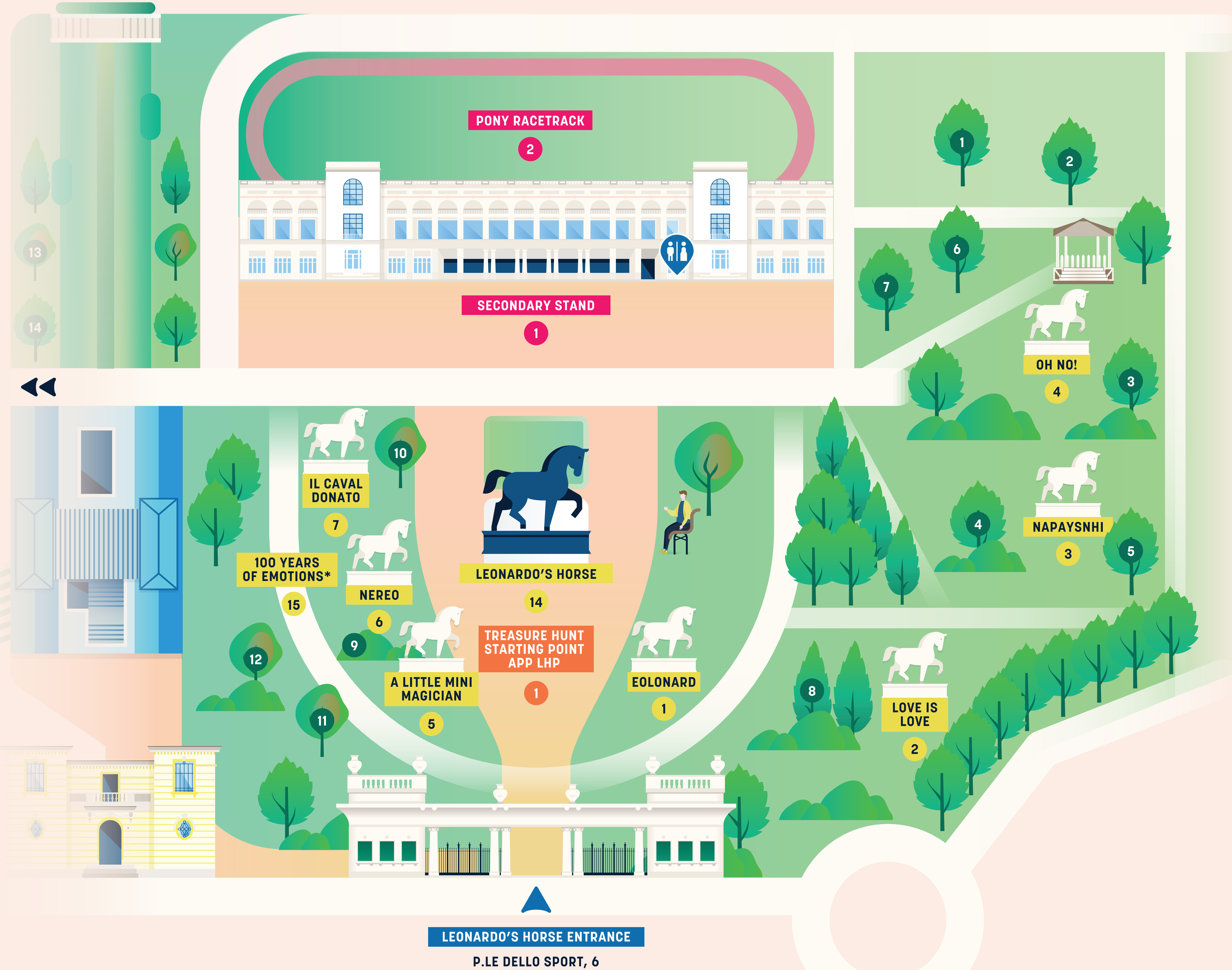




RACETRACK

4

N



LEONARDO'S HORSE ENTRANCE

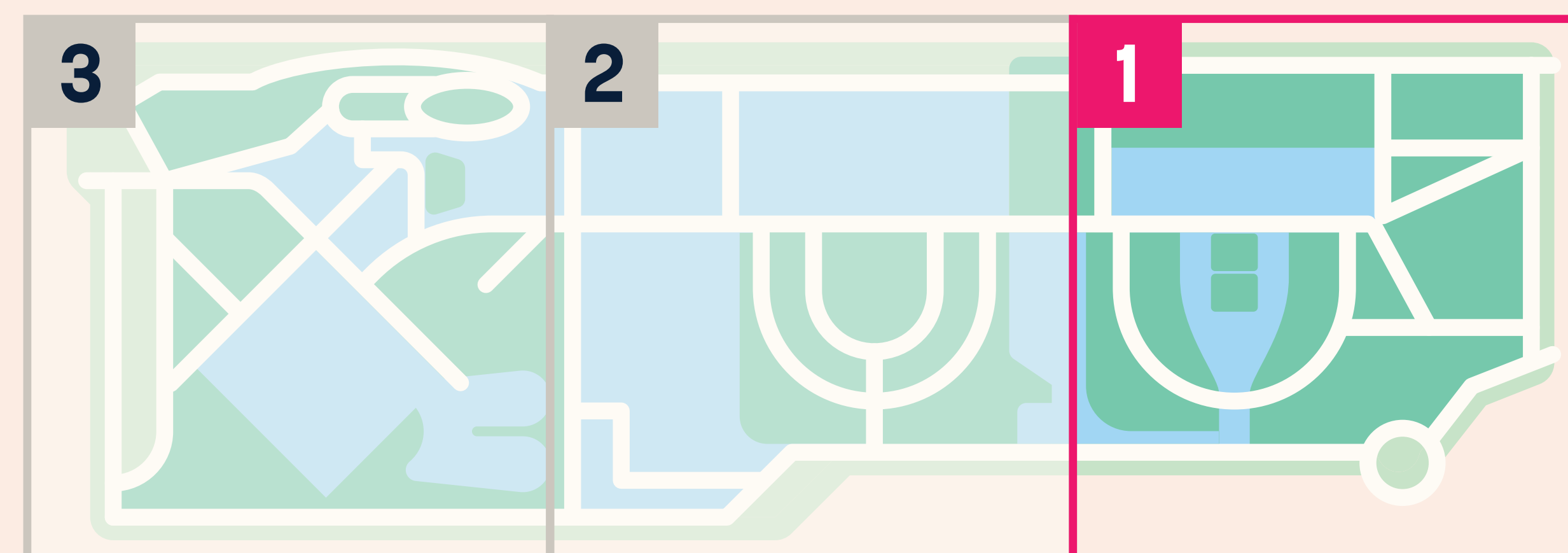
P.LE DELLO SPORT, 6

MAP KEY



TOILETTE

AREA 2 AND 3 ARE  
OPEN TO THE PUBLIC  
DURING RACE DAYS



# DISCOVER SAN SIRO

## POINTS OF INTEREST

### HISTORY AND ARCHITECTURE

- 1 Secondary Stand
- 2 Pony Racetrack
- 4 Racetrack •
- Authorized only

### ART AND DESIGN

- 1 Eolonard / Daniele Papuli
- 2 Love Is Love / Marcelo Burlon
- 3 Napaysnhi / Elena Salmistraro
- 4 Oh No! / Analogia Project
- 5 A Little Mini Magician / Marcel Wanders
- 6 Nereo / Serena Confalonieri
- 7 Il Caval Donato / Roberto Fragata
- 14 Cavallo di Leonardo
- 15 "100 years of emotions" exhibition  
\* from 17/10/2020

### FOR KIDS

- 1 Treasure Hunt starting point  
App Leonardo Horse Project

### BOTANICAL PARK

- 1 Olea europaea
- 2 Taxus baccata
- 3 Abies nordmanniana
- 4 Fagus sylvatica
- 5 Platanus x acerifolia
- 6 Ficus carica
- 7 Catalpa bignonioides
- 8 Chimonanthus praecox
- 9 Taxodium distichum
- 10 Tilia x maltkei
- 11 Cedrus deodara
- 12 Calocedrus decurrens

### CURIOSITY BOX

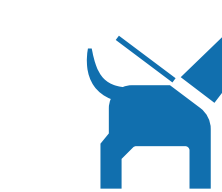
Leonardo's Horse is one of the largest equestrian sculptures in the world: 7,30 meters high and 10 tons of bronze in weight. Conceived from the original drawings of Leonardo da Vinci of around 1482, it was made only 500 years later in a statue by the American sculptor Nina Akamu.

Ludovico il Moro, Duke of Milan, wanted to dedicate a monument to the memory of his father and, for this reason, he hired Leonardo Da Vinci. Leonardo's perfectionism stretched the time of the project, which in the end was never completed as the French invaded the Duchy of Este to conquer Milan and the bronze destined for the Horse was used to make cannons to defend the city. Leonardo abandoned the project and left Milan.

In 1977, 478 years later, the American civilian pilot Charles Dent, fascinated by the history of the Horse, was able to

bring the work to completion through a fundraiser. In 1999 the statue was donated to the city of Milan and the Snai San Siro Racecourse was chosen to house it.

In 2019, on the occasion of the 500th anniversary of the death of Leonardo da Vinci, the equestrian statue was the center of a great enhancement project, the Leonardo Horse Project, created and promoted by Snaitech. The genius of the Florentine master was celebrated with thirteen scale reproductions of the Horse made by internationally renowned artists and designers. The Design Horses are located inside the Racecourse Botanical Park. By downloading the Leonardo Horse Project App you can learn many stories about the artists, the Horse and this place full of surprises.



Dogs on lead with muzzle



Do not litter



Do not play football



Do not pick flowers



Do not climb on artwork and monuments



No bicycles/ scooters/ roller skates/ skate boards



IPPO  
DROMO  
SNAI  
SAN SIRO

[https:// www.ippodromisnai.it/](https://www.ippodromisnai.it/)

[ippodromo\\_snai\\_san\\_siro](#)

[Ippodromo Snai San Siro](#)

[Ippodromo Snai San Siro](#)